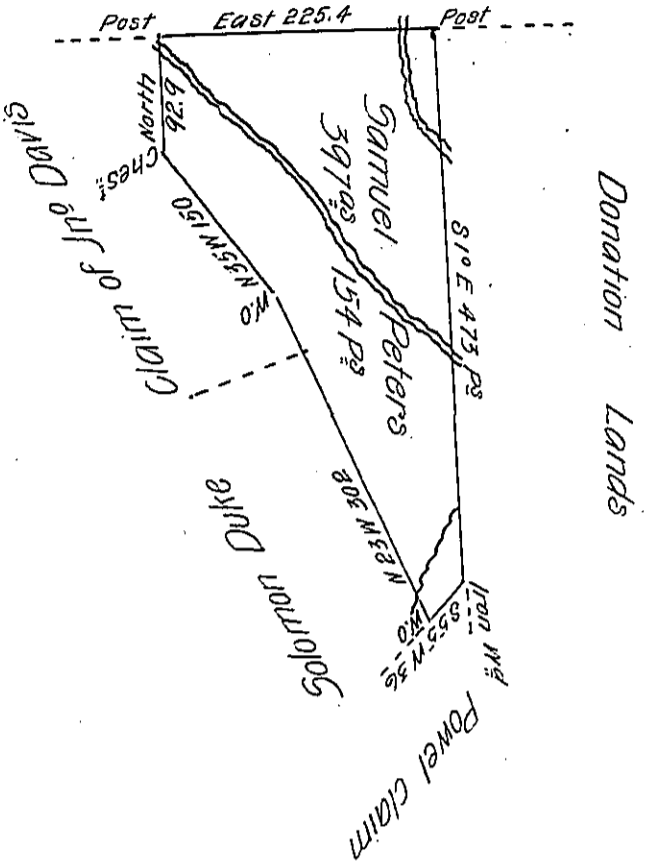


Hugh Doat

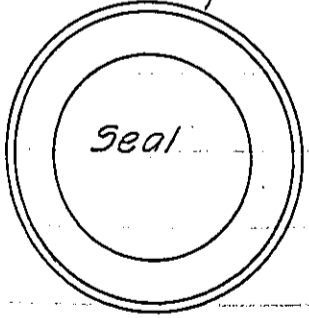


Situate on the East side of French creek in Allegheny County, containing 397 acres
 154 Perches & allowance of six P^r Cent for Roads &c. Surveyed the 14th day of October 1797
 in pursuance of a Warrant granted Samuel Peters bearing date the 8th day of June 1796
 & including his improvement bearing date the 17th day of May 1795.

John Power Dy. S^r

To Daniel Brodhead Esq^r
Surveyor General.

In testimony that the above is a Copy of the Original filed in the Surveyor Generals
 Office. I have hereunto set my hand and affixed the Seal of
 said Office at Harrisburg this 30th day of January 1821



Jacob Spangler S. G.

IN TESTIMONY that the above is a copy of the original remaining on file in
 the Department of Internal Affairs of Pennsylvania, made
 conformably to an Act of Assembly approved the 16th day of
 February, 1833, I have hereunto set my Hand and caused
 the Seal of said Department to be affixed at Harrisburg,
 this twenty second day of May 1906

Leach D. Brown
 Secretary of Internal Affairs.